

Plastics, Metals & Cartons

White Weighted Bag

How do I recycle my plastic, metals & cartons?

1. Rinse your tins and cans, and wash and squash your plastics and cartons.
2. Place your plastics, metals and cartons, tops and lids into your white bag.
3. Seal your white bag and place it at the kerbside for 7:00am on your collection day.
4. Materials will be taken to a Material Recovery Facility to be separated.
5. Once sorted the materials are then sent for recycling.



Do Recycle

Plastics

- plastic drinks & toiletry bottles
- clear bottles & detergent tubs
- plastic food pots, jars, tubs & trays
- plastic lids & tops

Metals

- food & drinks tins & cans
- empty aerosols
- clean aluminium foil & trays
- chocolate & biscuit tins
- metal lids & tops

Cartons

- liquid food & drinks cartons

Don't Recycle

- glass
- plastic bags, liners or film
- plastic pouches, wrappers or packets
- plant pots
- plastic or coffee cups
- polystyrene packaging or containers
- bubble wrap
- compostable packaging
- engine oil & paint cans
- cutlery & baking trays
- medication blister packs

Glass Bottles & Jars (all colours)

Green or black box

How do I recycle my glass bottle & jars?

1. Clean your glass bottles and jars and remove lids and tops.
2. Place your glass bottles and jars into your green or black box.
3. Make sure that your box has a cover tied on and place it at the kerbside for 7:00am on your collection day.
4. Glass bottles and jar are treated locally to create both a feedstock for new containers and a water filtration media.



Do Recycle

Glass bottles & jars

- food and drinks bottles & jars
- condiment bottles and jars
- toiletry and perfume bottles

Don't Recycle

- crockery, ceramics & pyrex
- windows & mirrors
- drinking glasses
- light bulbs
- broken glass
- plastic & metals lids & tops

Paper, Card & Cardboard

Blue box

How do I recycle my paper & card?

1. Collect all your paper, card & cardboard for recycling.
2. Remove any inserts, bags, protective packaging inserts like bubble wrap or polystyrene.
3. Flatten boxes.
4. Place your paper, card and cardboard in your blue box or secure cardboard in a bundle and put in another cardboard box.
5. Make sure that your box has a cover tied on and place it at the kerbside for 7:00am on your collection day.



Do Recycle

Paper

- brochures & leaflets
- catalogues & books
- envelopes (including window envelopes)
- newspapers & magazines
- unwanted mail
- all types & colours of paper

Card

- ready meal sleeves
- toilet & kitchen roll tubes
- cereal boxes
- egg cartons
- toothpaste & toiletries boxes

Cardboard

- brown & white corrugated boxes & packaging

Don't Recycle

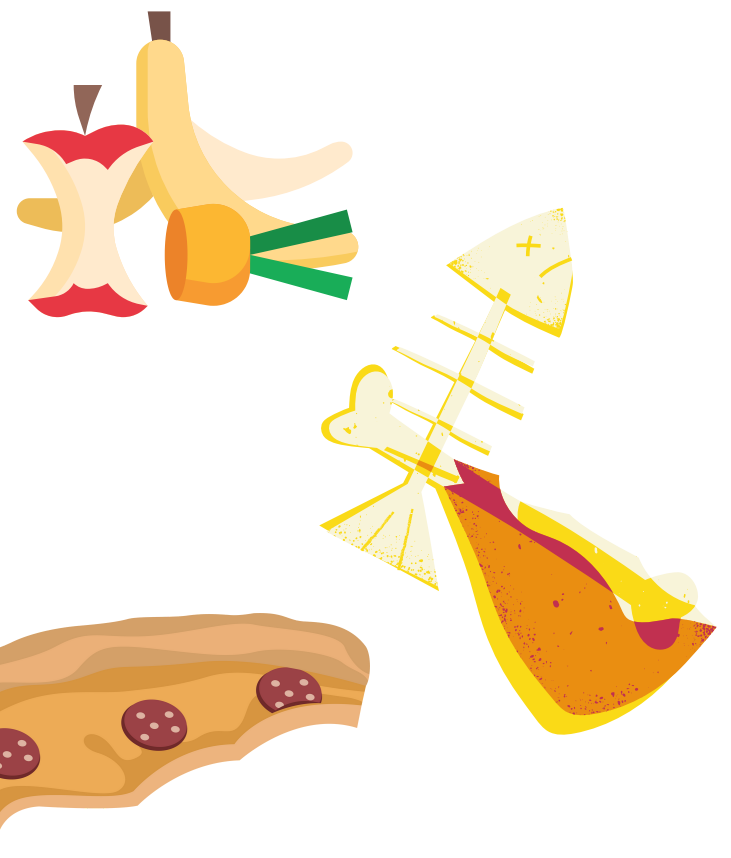
- plastic bags or wrappers
- padded envelopes
- food & drinks cartons
- tissues & napkins
- kitchen towels
- coffee cups
- paper plates
- plastic coated sandwich boxes
- wallpaper
- foil lined card tubes
- foiled or glitter wrapping paper
- polystyrene
- bubble wrap & air bags
- packing peanuts
- cardboard contaminated with food or grease

Food Waste

Food Caddy

How do I recycle my food waste?

1. Line your kitchen caddy with one of the plastic liners provided - only use the liners provided by East Lothian Council.
2. Place any cooked or uncooked food waste into the lined caddy.
3. When it is full, tie the liner and remove it from the caddy.
4. Put the tied liner into your outdoor caddy, ensuring the lid locks shut.
5. Place your outdoor caddy at the kerbside by 7:00am on your collection day.



Do Recycle

Cooked and uncooked food waste including

- breads, cakes, pastries & cereals
- eggs - including shells
- fish & meats - including bones, skins, shells & fat
- fruit & vegetables - including cores & peelings
- pet food - wet & dry
- rice, pasta & beans
- tea bags & coffee grounds
- hard fats & lards

Don't Recycle

- oils or other liquid fats
- any plastic or compostable packaging or bags, except for the liners provided by East Lothian Council
- animal faeces or bedding

Household Batteries

Food Caddy Liner

How do I recycle my household batteries?

1. Collect your batteries.
2. Use an empty food caddy liner to contain them.
3. Tie the liner securely.
4. Place the bagged batteries on top of your covered glass box at the kerbside for 7:00am.



Do Recycle

- all household batteries including 'button' batteries from watches
- battery packs from laptops, mobile phones, power tools & remote control units

Don't Recycle

- car batteries
- electrical items

How are they recycled?

Batteries are:

- sorted into different chemical types
- combustible elements are removed
- cells are chopped up and gently heated
- metals are recovered by weight and used in new products

Recycling Centre

Car batteries and electrical items can be recycled at your local Recycling Centre. Please remove batteries and power packs, if you can safely, before recycling your electrical items.